



affordable housing alliance

*Hope. Strength. Community.*

## Ocean County Rapid Rehousing (RRH) Program

### What Is It?

- Rapid Rehousing Programs are designed to help individuals and families quickly exit homelessness and return to permanent housing.
- Rapid Rehousing can include short-term, future rental assistance bundled with services designed to help people experiencing homelessness obtain and remain housed and increase their overall level of self-sufficiency, all without preconditions.
- Participants enter a lease directly with landlords and typically pay 30% of their income as rent. The RRH programs cover the rest of the rent for a specified period of time, allowing the participant the ability to stabilize.

### Eligibility Criteria

- All referrals **MUST** originate via Coordinated Entry
- Initial referral from Coordinated Entry will determine key factors including Ocean County residency, homelessness, reported income, & evidence of an ability to sustain housing when assistance ends.
- The AHA administers a few different RRH programs funded by different sources with varying eligibility requirements, including income limits and rent payments.

### Key Considerations

- Placement is reliant on the availability of apartments within the community. A lack of available units can delay move-in. The Applicant and the AHA's RRH team must work closely together to identify eligible apartments.
- The AHA can provide certain incentives to landlords who participate in the program, including lump sum payments. Interested landlords can contact [RRH@housingall.org](mailto:RRH@housingall.org) to participate.

### How To Access Rapid Rehousing Services

- To access Rapid Rehousing services, an applicant must be referred through Coordinated Entry.
- Upon referral, a Rehousing Specialist will provide the applicant with the required forms and review the needed documentation to continue. A Rehousing Specialist may assist in completing these.
- When all applications, forms, and documents are received and reviewed, an eligibility determination is made.
- Once approved, the applicant will be entered into an appropriate program and begin working with AHA staff on their counseling and stability planning.
- Once a unit has been identified and the applicant moves in, Rehousing Stability Counselors continue to work through stability plans, financial coaching, and general assistance.

## Ocean County Rapid Rehousing (RRH) Program Contact

**732-341-2272**

**[RRH@HousingAll.org](mailto:RRH@HousingAll.org)**

**[HousingAll.org](https://HousingAll.org)**

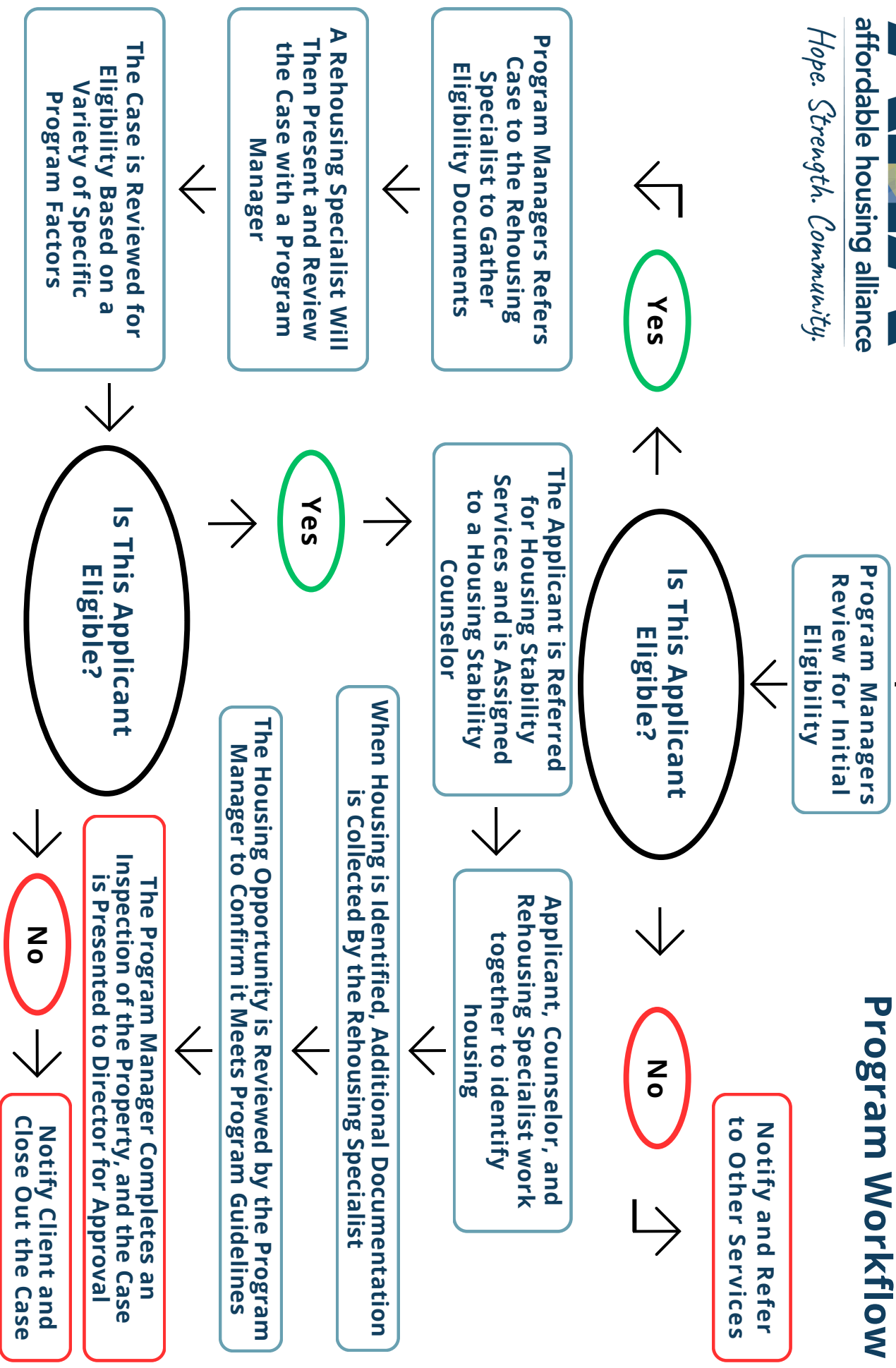


affordable housing alliance

*Hope. Strength. Community.*

An Applicant is Referred By  
the Coordinated Entry Team

## Ocean County Rapid Rehousing Program Workflow



**Ocean County Rapid Rehousing Program Contact**

732-389-2958

[HSDocs@HousingAll.org](mailto:HSDocs@HousingAll.org)

[HousingAll.org](http://HousingAll.org)